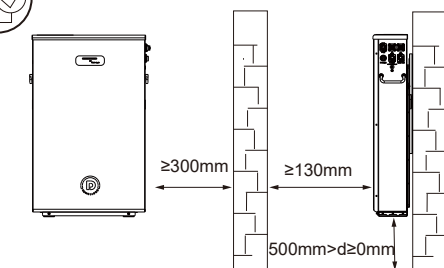
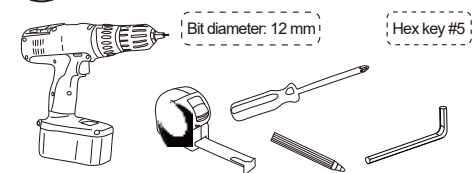
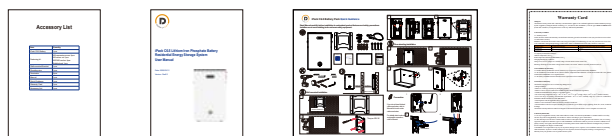
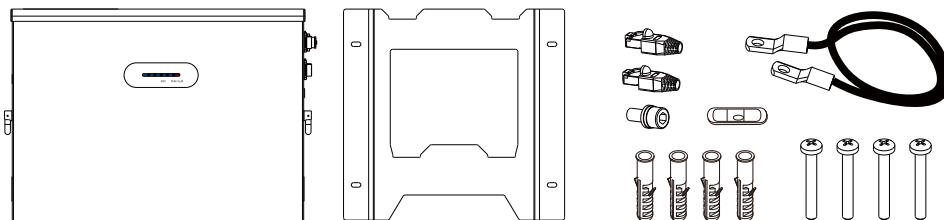


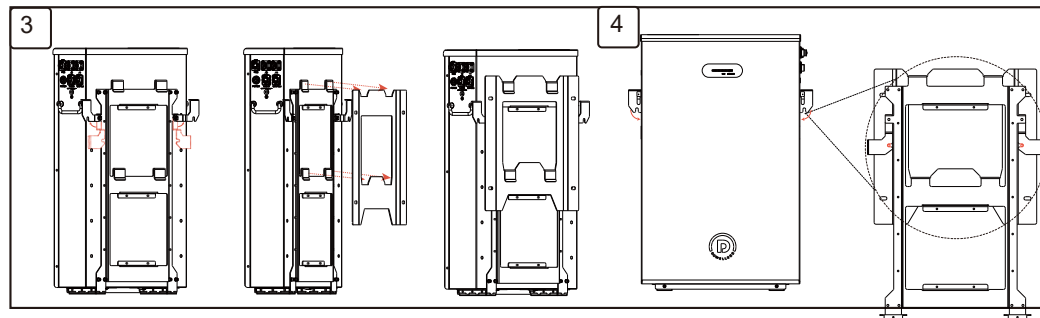
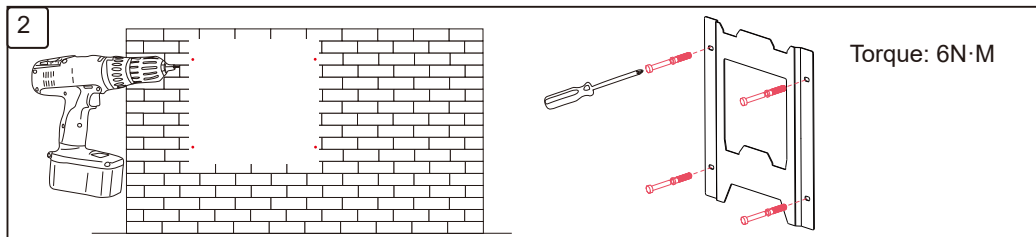
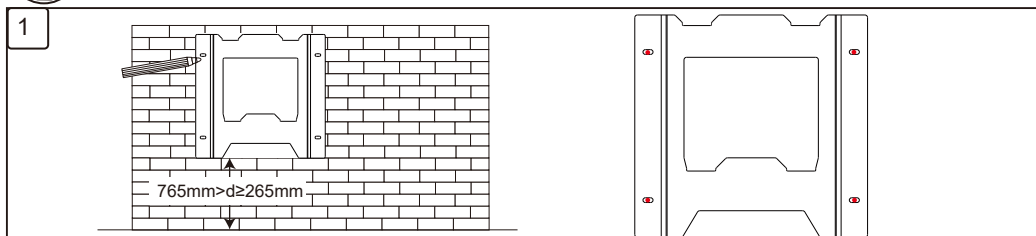


## iPack C6.5 Battery Pack Quick Guidance

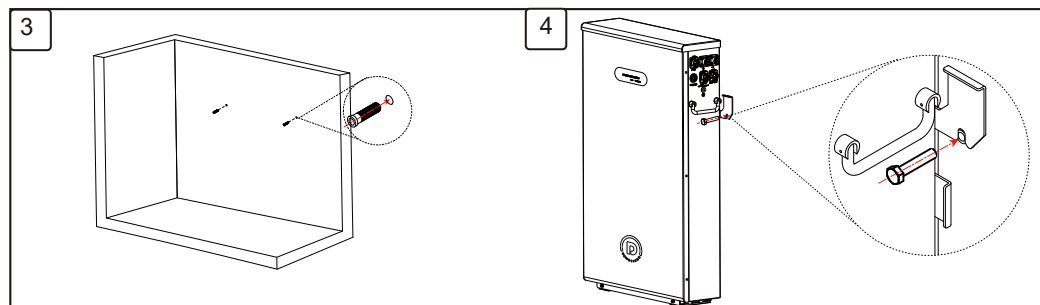
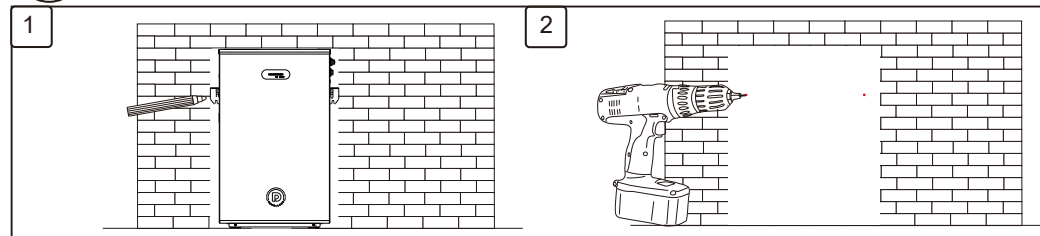
Read Manual carefully before installation to understand product features and safety precautions. Installers must use insulating tools and wear safety equipment.



### Wall-mounted Installation



### Floor-standing Installation



### Connection

If you do not have finished cables and wires, refer to Manual for how to make cables and wires.

For details about cautions and parallel connection, refer to Manual.

